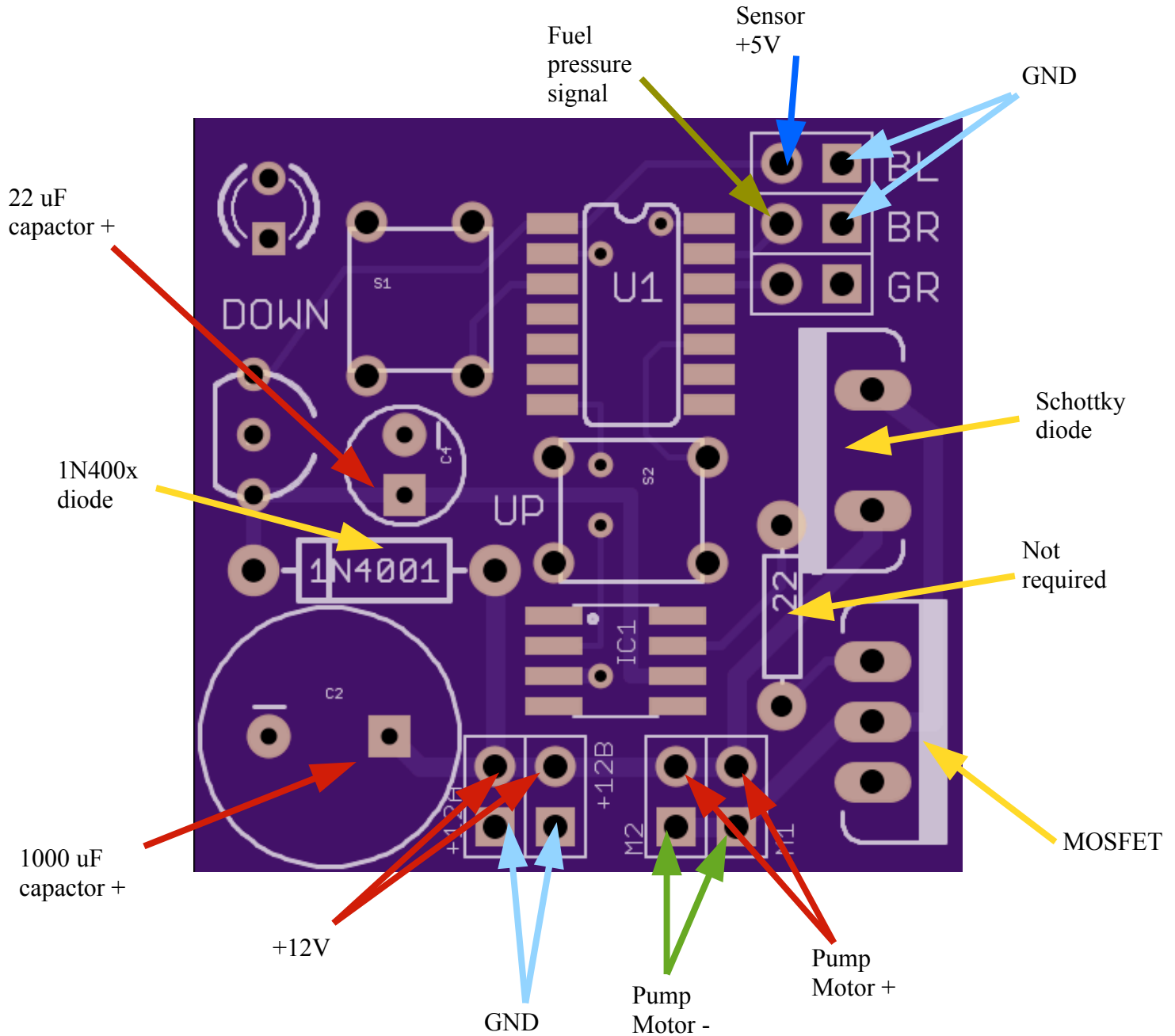


Surface mount components are already installed. Follow the diagram below to install remaining components and external wiring.

Once power is applied, the LED should blink twice to indicate proper operation. Additional instructions are available at <http://www.madhu.com/content/Main/FuelPumpController>



Note polarization of electrolytic capacitors and 1N400x diode. Follow silk screen orientation for power components (heat sink tab is prominent). An image of a completed board can be found at <http://www.madhu.com/content/Main/FuelPumpController>